

Strathaven and Glassford Local Place Plan

Our Plans
for the Future



Contents

Foreword and Acknowledgements	3
1. Introduction	4
2. Our Vision for Strathaven and Glassford	6
2.1 Our Vision	7
2.2 Our Investment Themes	8
2.3 Strategic Objectives	9
2.4 Boundary Map	10
3. Our Challenges and Needs	11
3.1 Infrastructure	12
3.2 Housing	12
3.3 Public Transport	12
3.4 Access to Green Spaces	12
3.5 The Local Economy	12
4. Interventions and Investments	13
4.1 Themes, Objectives and Project Priorities	14
4.2 Place Map	17
5. Development of the Plan	20
5.1 Strathaven and Glassford Community Council	21
5.2 Overview	21
5.3 The Process	22
6. Strategic Alignment	23
7. Measuring Success	26
8. Management and Monitoring	29
Appendix 1: About Our Place	31
Appendix 2: Summary of Community Consultation	33
Appendix 3: Wider Policy and Strategy Summary	35
Afterword	37

We know that we are lucky to live in a beautiful part of Scotland, rich in history and heritage, surrounded by countryside, and in a community with a plethora of local organisations and initiatives, and thriving independent local businesses.

Strathaven and Glassford Community Council is part of the Kype Muir Partnership, which manages the Kype Muir Community Fund. When we received funding from them to carry out this Plan for the future of our community, the first question we asked was, "We know that Strathaven and Glassford are great places to live - but what would make them even better?"

We have worked alongside independent consultants Community Enterprise to create a Plan for the area, which sets out the long-term vision that our community wants to achieve over the next five years and beyond.

We wanted to make sure we heard from local residents, voluntary groups, young people and businesses about what will make a direct difference to you, your family, and your neighbours.

We would like to thank all the groups and individuals who took part in many discussions over the summer of 2024. In particular we would like to thank the young people of Kirklandpark Primary School, Glassford Primary School, Brownies and Guides, who shared their views and suggestions in dynamic and creative ways. They are the future of our community, and we hope that this Plan will do them proud.

Aileen McMann

Chair, Strathaven and Glassford Community Council



Introduction

01

The idea of a specific geographical place being important and having control of its facilities and services has been an important direction of travel for Scotland, and the “place principle” was adopted in 2018. As part of this way of thinking, the National Planning Framework 4 was enacted in February 2023.

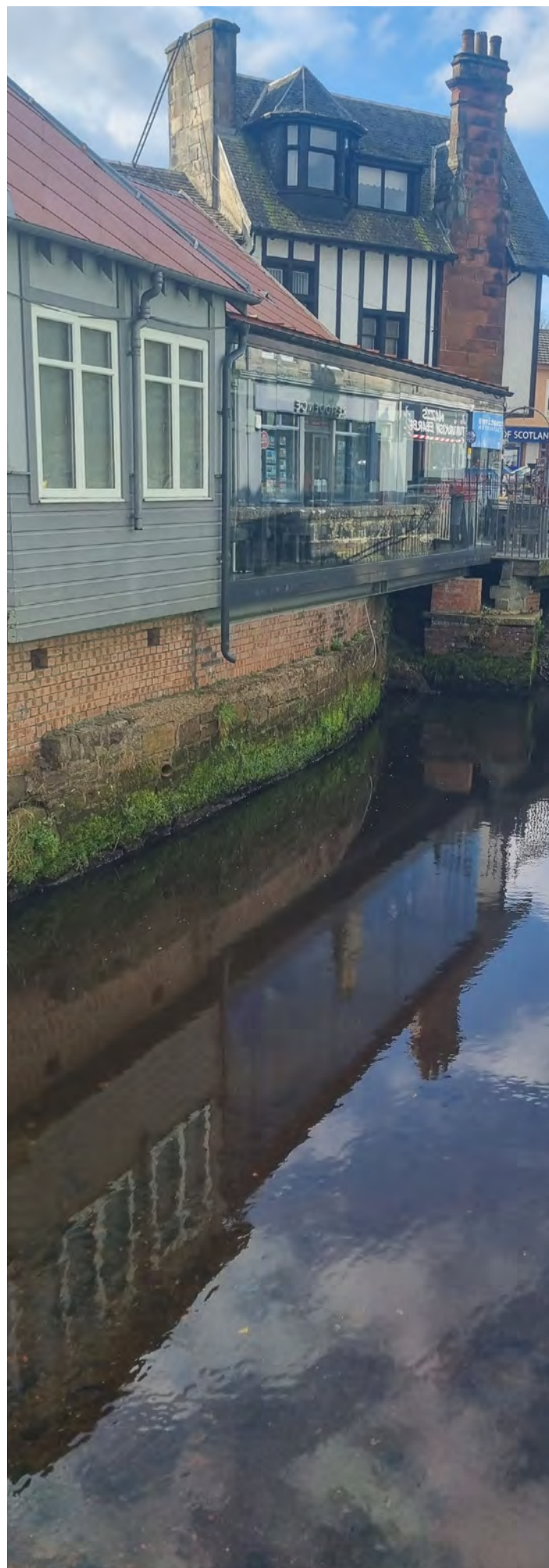
This gives communities the right to feed into the planning system with ideas, and the right to influence policy. Rather than the local authority having sole responsibility, it gives communities like ours the opportunity to get its people to drive change from the bottom up.

This Local Place Plan will be submitted to South Lanarkshire Council, and will influence the development of its next Local Development Plan. The Plan will identify what should happen in each community, and where it should happen.

However, the focus of a Local Place Plan is not restricted to South Lanarkshire Council's planning concerns. Some of the themes and project ideas included here will be the responsibility of the community ourselves.

With a Local Place Plan registered and verified, the people of our community will be able to influence and drive developments in the area, and this is our platform to voice our own aspirations for the area.

Our Local Place Plan sets out an ambitious ten-year vision for Strathaven and Glassford.



Our Vision for Strathaven and Glassford

02

2.1 Our Vision For Strathaven and Glassford

Strathaven and Glassford will be a vibrant, welcoming, well connected and thriving community, where people of all ages work together to make it an even better place to live, work, enjoy leisure time, and visit.



2.2 Our Investment Themes

The Place Plan process has identified five core thematic areas that will underpin and support the achievement of the vision.

- 01 An Active Place for All

- 02 A Sustainable, Beautiful and Accessible Place

- 03 An Economically Thriving Place

- 04 A Place with Sustainable Services

- 05 Environment and Greenspace

2.3 Strategic Objectives

Directly aligned to the investment themes, we have five core strategic objectives, with the specific purpose of setting out what the community of Strathaven and Glassford wants to achieve over the next 10 years.

These are:

01 An Active Place for All

Strategic Objective: We will be a place with great facilities where people can gather and where our assets can be of benefit to people of all ages, abilities and backgrounds

02 A Sustainable, Beautiful and Accessible Place

Strategic Objective: Our environment and townscape will be well looked after, accessible to all and biodiverse in a way that transitions our community to net zero.

03 An Economically Thriving Place

Strategic Objective: We will be a place where the community helps to create a vibrant wellbeing economy.

04 A Place with Sustainable Services

Strategic Objective: Our place will have sustainable services so that all our inhabitants enjoy a good standard of living.

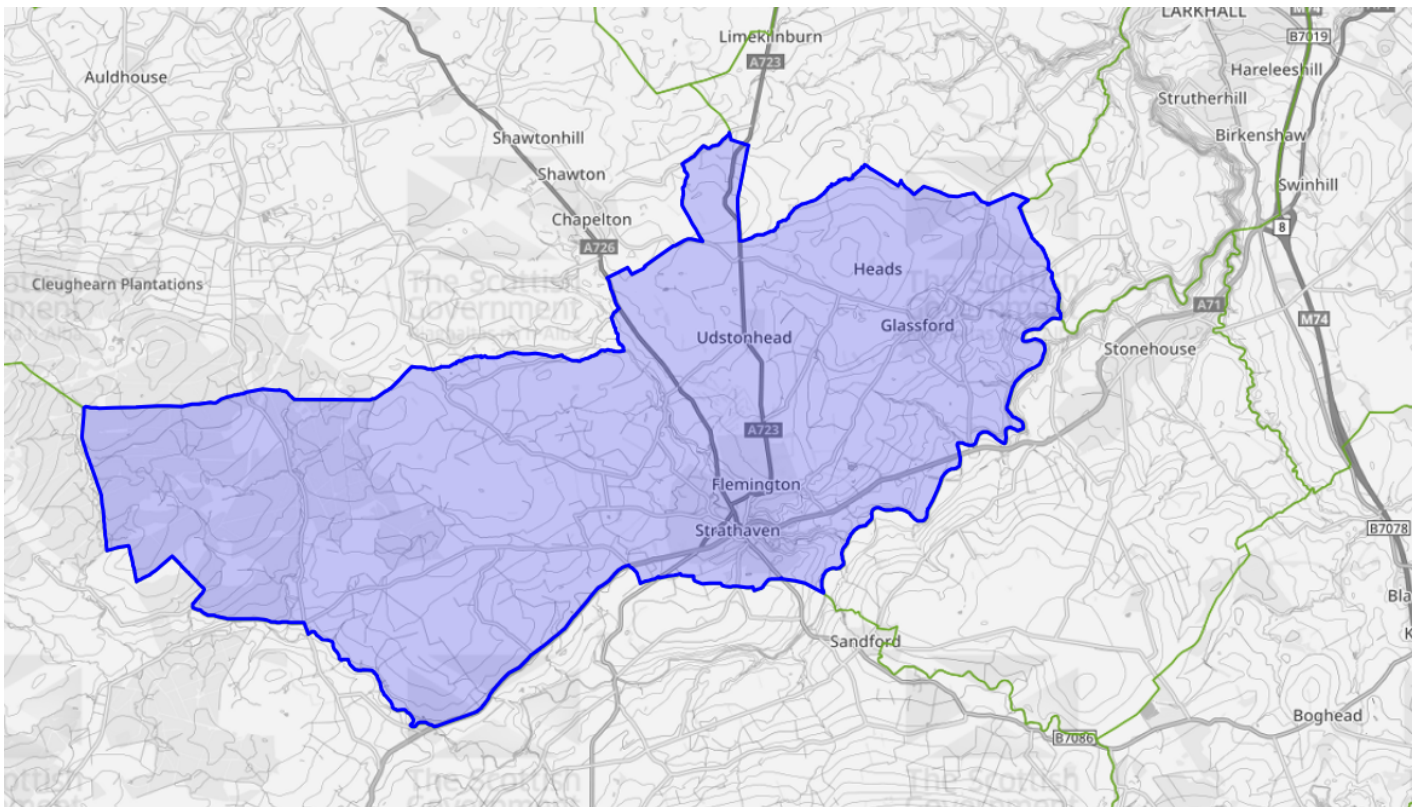
05 Environment and Greenspace

Strategic Objective: We will have appropriate and affordable housing for all stages of life.

2.4 Boundary Map

Strathaven is a historic market town in South Lanarkshire, and is the largest settlement in Avondale. It is on the A71 trunk road between Edinburgh and Kilmarnock. Glassford is a village north east of Strathaven.

The area covered in this Local Place Plan is the Strathaven and Glassford Community Council area, shown on the map below.



Our Challenges and Needs

03

3.1 Infrastructure

Strathaven's population has grown by 16.9% between 2001 and 2022, which is significantly higher than the average South Lanarkshire population growth (+8.2%) and the national average for population growth (+7.5%).

There is a clear concern that with the growth in population in Strathaven, the town's infrastructure is under significant pressure. This includes e.g. access to GP services, and the physical infrastructure of e.g. schools being at capacity.

It also includes concerns about road maintenance, traffic management and parking. There is a concern about the lack of public toilets. There are some concerns about the general maintenance and upkeep of the area, e.g. litter, shop front maintenance in Strathaven.

The community has voiced a clear desire for a moratorium on further expansion, so that the area has the chance to properly absorb the recent population growth.

3.2 Housing

Despite the large number of new build properties, this has not improved access to affordable housing or smaller properties (e.g. for young people getting on the property ladder, or older people downsizing).

There is a desire to see supported housing for older people to release bigger houses for young families, and better affordable housing options to buy and rent.

3.3 Public Transport

The area is rural, and in a context where 15% of households in Strathaven do not own a car, public transport links are vital to local people and the economy.

The 3C bus is highly valued across the community, and there are concerns about what would be lost if the 3C bus was discontinued for any reason (including funding).

There is a desire to see the 3C bus extended, both in terms of timetabling, and geographical reach (e.g. to Edinburgh).

3.4 Access to Green Spaces

People would like to have better access to the countryside, e.g. through improved paths and signage.

There is concern about the maintenance of / facilities within Strathaven Park, in the context of local authority funding cuts.

3.5 The Local Economy

More could be done to promote the independent retailers in Strathaven, both within the town, and by bringing people in to the area.



Interventions and Investments

04

4.1 Themes, Objectives and Project Priorities

The responses and engagement with the community, groups and organisations in Strathaven and Glassford have helped us identify the challenges faced by the community, and the actions we should undertake to work towards achieving that vision.

They require combinations of actions by South Lanarkshire Council and partnership working with other agencies such as South Lanarkshire Leisure and Culture, by local organisations, and the community itself. In many areas, funding will need to be secured to deliver these actions. Because of the high level of existing community activities, much of the focus is on consolidating and sustaining projects and plans that are already underway.



Theme 1: An Active Place for All

We will be a place with great facilities where people can gather and where our assets can be of benefit to people of all ages, abilities and backgrounds.

We are committed to making Strathaven and Glassford even better places to live. In particular, we would like to increase facilities for people in the 15-25 age group.

Priority Projects

- 1.1 Community events and festivals: supporting and developing the existing programme of year-round community events, so that these are sustainable for the long term future.
- 1.2 Development of facilities for young people aged 15-25, including leisure facilities, activities and creative opportunities.
- 1.3 Development of information sharing about what is available in the community, and events, at central locations in the area.
- 1.4 Support and develop heritage and arts projects, including Strathaven Castle, John Hastie Museum and the Town Mill.

Theme 2: A Sustainable, Beautiful and Accessible Place

Our environment and townscape will be well looked after, accessible to all and biodiverse in a way that transitions our community to net zero.

We will protect and enhance our local environment.

Priority Projects:

- 2.1 Protect and enhance local greenspaces and the natural environment, including Strathaven Park and its facilities, including disability access, and the children's play parks in Strathaven and Glassford, including disability access.
- 2.2 Development of active travel and local walking and cycle routes, including improving and widening footpaths for accessible access for all, both within and between Strathaven and Glassford and other villages.
- 2.3 Lobby South Lanarkshire Council for road improvements and traffic control measures.
- 2.4 Improve parking options and signposting to existing parking places, for both visitors and locals.
- 2.5 Improve the maintenance of street furniture in the area including lampposts, railings and bins. Improve and correct signage throughout the area.

Theme 3: An Economically Thriving Place

We will be a place where the community helps to create a vibrant wellbeing economy.

We will continue to develop and promote our independent businesses.

Priority Projects:

- 3.1 Promote in person services, such as banking and postal services.
- 3.2 Create a shop and café in Glassford, as part of the development of a community hub in Glassford Hall.
- 3.3 Review, develop and promote initiatives that support Strathaven as a shopping destination for independent businesses, and encourage people to 'buy local'.



Theme 4: A Place with Sustainable Services

Our place will have sustainable services so that all our inhabitants enjoy a good standard of living.

We will strive for equality of access to services across our area.

Priority Projects

- 4.1 Lobby the Council / NHS to improve access to healthcare, including GP availability, and improve access to integrated health services, including complementary health and mental health services.
- 4.2 Work with the Council to clarify and explain the existing legislation around parents accessing schools of their choice.

Theme 5: A Place to Live Well

We will have appropriate and affordable housing for all stages of life.

Good quality and accessible housing for all life stages is important to us a community.

Priority Projects:

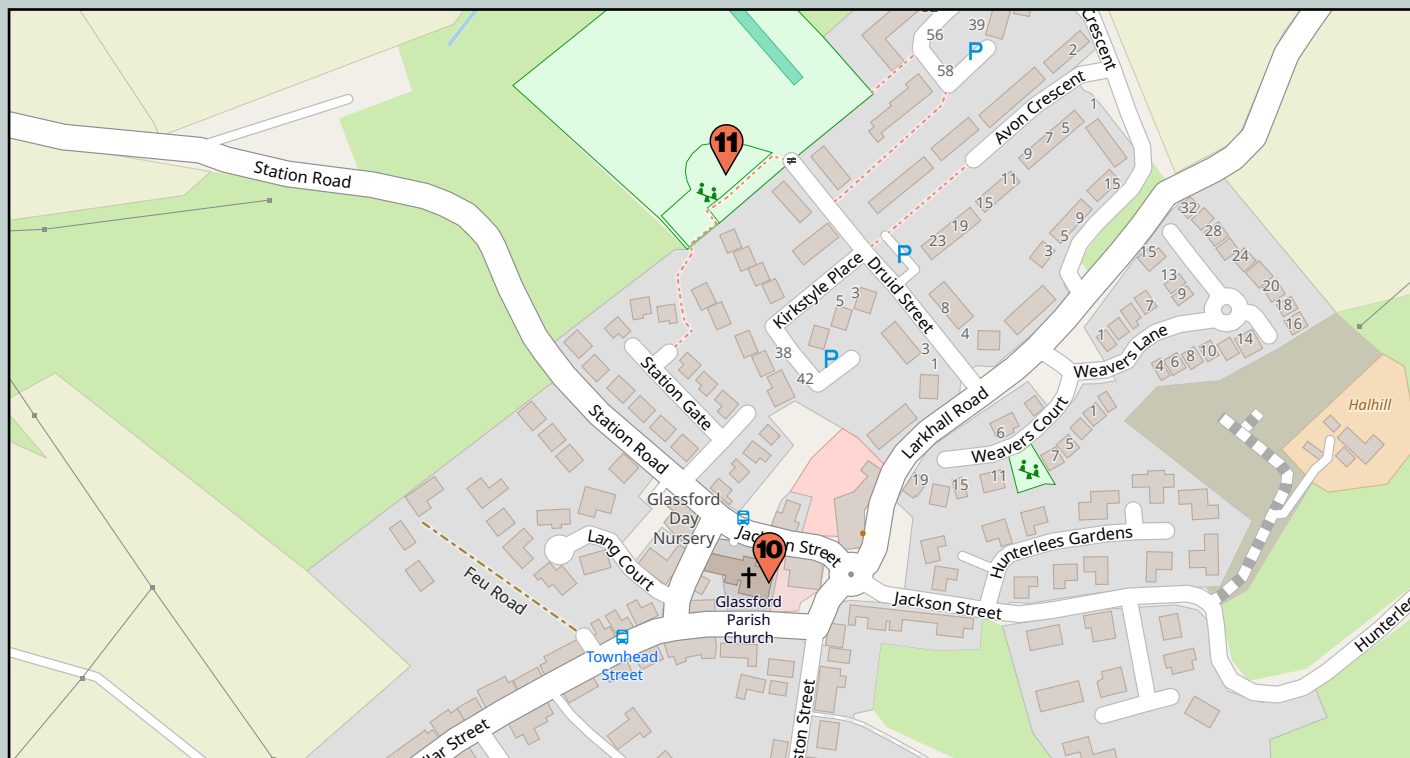
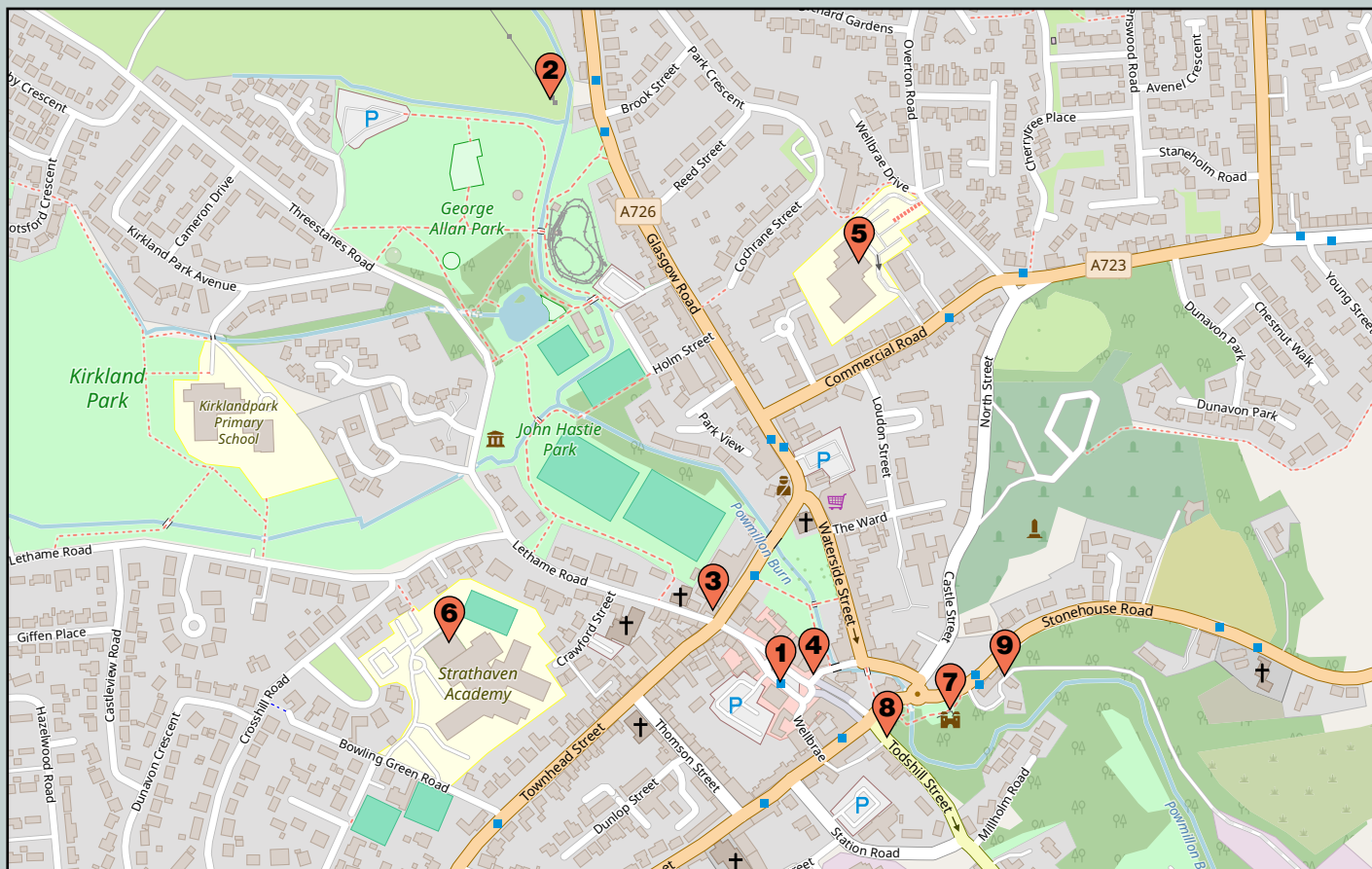
- 5.1 Ensure that the Council recognises the community's desire for a moratorium on the expansion of Strathaven with large scale housing developments of large houses which increases pressure on the town's infrastructure.
- 5.2 Promote supported housing for older people to release bigger houses for young families.
- 5.3 Promote more affordable housing options to buy and rent, including social housing.



Place Map

04

4.2 Place Map



Map Ref	Location	Project Reference
1	Common Green	1.3, 2.5, 3.1, 3.3
2	Strathaven Park	2.1
3	Climate Action Strathaven	2.2, 2.3
4	Creative Strathaven CIC	1.2
5	Avondale Community Wing	1.3
6	Strathaven Leisure Centre	1.2
7	Strathaven Castle	1.4
8	John Hastie Museum	1.4
9	Strathaven Town Mill	1.4
10	Glassford Hall	3.2
11	Druid Street Playground	2.1

Development of the Plan

05

5.1 Strathaven and Glassford Community Council

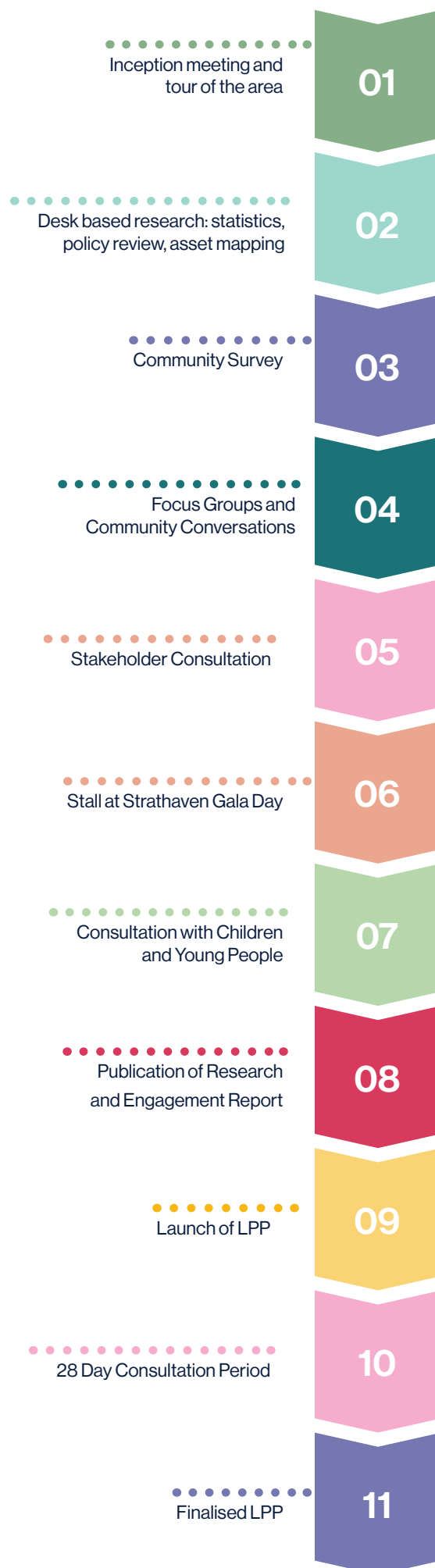
Strathaven and Glassford are part of the Avondale and Stonehouse ward of the South Lanarkshire council area.

Strathaven and Glassford Community Council has commissioned this Plan. It is an eligible community body to submit a Local Place Plan to South Lanarkshire Council.

5.2 Overview

Our Local Place Plan has been community-led. It has been developed using different engagement methods, all designed to ensure the widest representation of views from within the community.

These are summarised below in section 5.3.



5.3 The Process

Our Local Place Plan was developed using a variety of different community engagement mechanisms, aimed at giving as many people as possible the opportunity to share their views.

Community Enterprise carried out participative research from May to July 2024, to ensure that there was a range of opportunities for people to share their views. The programme included time spent getting to know the area, encouraging engagement, and building a presence in the community.

The aim of the research was to build up both a quantitative and qualitative picture of what local people think.

An outline of the methodology is as follows:

Demographics and statistics

A variety of different data sets have been analysed.

Asset mapping exercise

The production of a map of the main assets across the area to understand the current level of provision. This is not an exhaustive list of every possible community space and activity, but an analysis of the most important ones.

Community survey

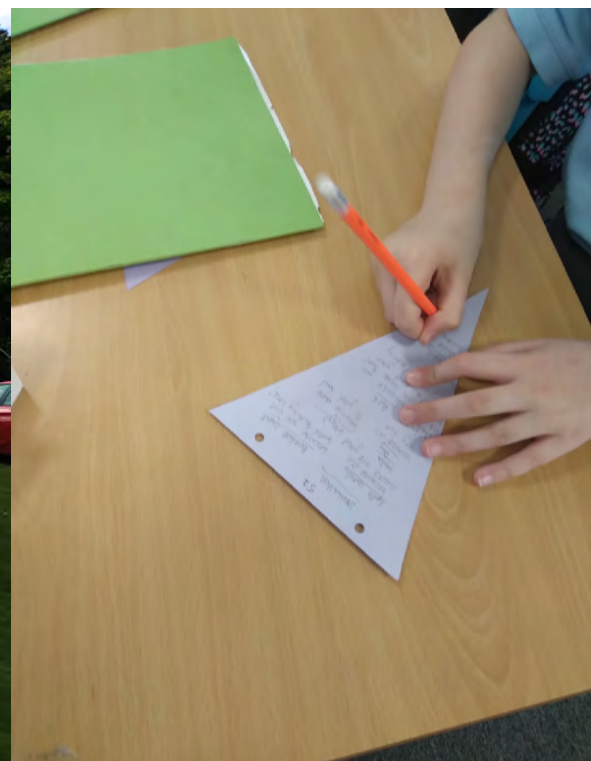
This was undertaken to gather a broad range of community views about what people like and dislike about the area, and what people would like to see happen in the future.

- A campaign was launched in May 2024, with a press release, through the Community Council website, and local group Facebook pages. Regular reminders were posted about the survey between May and July 2024.
- Posters were distributed throughout the area at key locations including public noticeboards, shops and cafés.
- Paper copy surveys were similarly made available across the area.
- 201 people responded to the survey, representing the views of 444 people in total.

Community Consultation

A range of consultation methods was used to engage the wider community in face to face conversations. This included:

- 1:1 semi structured interviews with representatives of community organisations and local businesses, including Friends of Strathaven Castle, Strathaven Town Mill, Friends of Strathaven Park and Strathaven Choral Society
- Informal discussions with Community Council members, a local knitting group, and shopkeepers in the Common Green
- Focus groups with Brownies and Guides in Strathaven
- Creative sessions with pupils at Kirklandpark Primary School in Strathaven and Glassford Primary School
- A stall at Strathaven Gala Day
- A stall at Climate Action Strathaven to share initial findings and feedback



Strategic Alignment

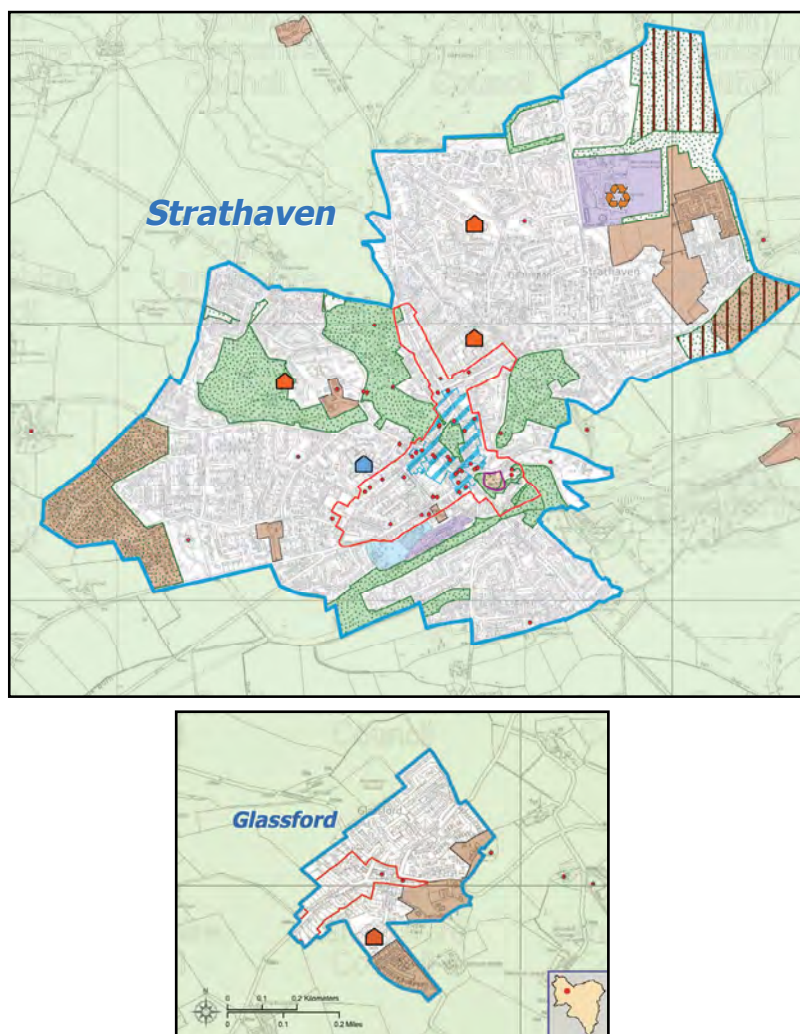
06

We aim to have our Local Place Plan registered by South Lanarkshire Council so that it will be taken into consideration during the preparation of Local Development Plan 3. The preparation of our Plan has been in the context of Local Development Plan 2 (Adopted) and reflects current planning objectives.

Core Strategic Fit

Key Strategies	Outcome	Measurements
South Lanarkshire Local Development Plan 2	<p>Regional Vision</p> <p>LDP2 seeks to ensure that future development takes place in a sustainable way and respects the distinctive and valued qualities of the area's natural and built environment. The plan also encourages economic growth and regeneration.</p> <p>The plan identifies four themes around which objectives have been structured:</p> <ul style="list-style-type: none"> • Encouraging sustainable economic growth • Meet the communities needs • Enhance and safeguard the environment • Maximise the use of and seek opportunities to enhance existing infrastructure. 	<p>How it fits with our area</p> <p>Our Local Place Plan has been thoughtfully crafted in alignment with the strategic priorities of LDP2. At the forefront is the commitment to sustainable growth, ensuring that the needs of the community are fully met. The plan also emphasises the significance of bolstering the local economy and supporting businesses to help them thrive. Central to our approach is the effective utilisation of existing assets, including local greenspaces and the surrounding rural environment, to enhance the quality of life for all residents.</p>

LDP Map



National Planning Framework 4	
<p>There are six overarching spatial principles:</p> <ol style="list-style-type: none"> 1. Just transition. We will empower people to shape their places and ensure the transition to net zero is fair and inclusive. 2. Conserving and recycling assets. We will make productive use of existing buildings, places, infrastructure and services, locking in carbon, minimising waste, and building a circular economy. 3. Local living. We will support local liveability and improve community health and wellbeing by ensuring people can easily access services, greenspace, learning, work and leisure locally. 4. Compact urban growth. We will limit urban expansion so we can optimise the use of land to provide services and resources, including carbon storage, flood risk management, blue and green infrastructure and biodiversity. 5. Rebalanced development. We will target development to create opportunities for communities and investment in areas of past decline and manage development sustainably in areas of high demand. 6. Rural revitalisation. We will encourage sustainable development in rural areas, recognising the need to grow and support urban and rural communities together. 	<p>This Local Place Plan establishes clear priorities and actions to implement the spatial principles outlined in NPF4.</p> <p>Through this plan, we aim to:</p> <ul style="list-style-type: none"> • Maximize the use of existing buildings for the benefit of the community. • Develop initiatives to ensure our transition to net zero. • Enhance local liveability by increasing the availability and accessibility of community assets. • Improve access to greenspaces and the surrounding rural areas, ensuring they are accessible to all residents. <p>This plan is designed to ensure that Strathaven and Glassford thrive as a vibrant, welcoming, well connected and thriving community, where people of all ages work together to make it an even better place to live, work, enjoy leisure time, and visit.</p>

Measuring Success

07

Theme 1: An Active Place for All

We will be a place with great facilities where people can gather and where our assets can be of benefit to people of all ages, abilities and backgrounds.

Output	Outcome	Measurements
No. of community events	Improved sense of community and belonging	Monitoring footfall at community facilities
No. of play and leisure facilities locally	Reduced social isolation	Regular community surveys conducted locally
No. of new / improved events and facilities for 15-25 year olds	Improved access to community facilities	
No. of community groups hiring existing community facilities	Better facilities for young people aged 15-25	
No. of arts and heritage projects developed	Increased civic pride in our heritage	

Theme 2: A Sustainable, Beautiful and Accessible Place

Our environment and townscape will be well looked after, accessible to all and biodiverse in a way that transitions our community to net zero.

Output	Outcome	Measurements
No. of initiatives to improve green spaces and playparks	Increased use of local outdoor spaces for recreation	Registry of all public transport routes, noting which routes have been re-established
No. of new walking paths / cycle ways created	Reduced reliance on car transport	Detailed project log for new walkways and paths
No. of initiatives to improve town centre	Improved uptake of local public transport	Periodic surveys to gather data on local transport and connectivity links
No. of people using walks and cycle paths	Reduced emissions	Use of GIS for mapping and tracking changes in infrastructure
No. of local public transport routes retained / re-established	Improved health and wellbeing	
	Improved infrastructure	
	Improved liveability in a semi-rural location	

Theme 3: An Economically Thriving Place

We will be a place where the community helps to create a vibrant wellbeing economy.

Output	Outcome	Measurements
No. of new community facilities	Improved and diversified local economy	Changes in the revenue of supported businesses before and after support
No. of existing / new local businesses supported	Increased resilience and growth of existing local businesses	Surveys with business owners to gauge satisfaction with the support provided and their perceived impact on business performance
No. of new initiatives to support local / independent businesses, and encourage people to 'buy local'	Growth in entrepreneurship	Track the number of new business registrations in the area over time and their survival rate over time (1-3 years)
	Enhanced capacity for local businesses to operate and expand	
	Improved access to goods and services	

Theme 4: A Place with Sustainable Services

Our place will have sustainable services so that all our inhabitants enjoy a good standard of living.

Output	Outcome	Measurements
Improved access to healthcare	Improved health and wellbeing	Surveys to assess changes in public perception regarding access to healthcare services
Increase in provision of integrated health services, including complementary health and mental health services		NHS data

Theme 5: A Place to Live Well

We will have appropriate and affordable housing for all stages of life.

Output	Outcome	Mesurements
A range of housing options for all ages, from younger people to families to older people downsizing	Improved housing conditions	Council data
Supported housing options for those in need of care and support	Improved quality of life	
Affordable housing options, for renters and first-time buyers		

Management and Monitoring

08

Strathaven and Glassford Community Council will be the lead body to retain a watching brief over the implementation of this Plan.

This includes ensuring that South Lanarkshire Council responsibilities are undertaken, and supporting the delivery of projects the community and local agencies are responsible for.

The Community Council will oversee the success of the Plan but will also be responsible for reviewing it periodically to respond to changes in the local environment, many of which we will not be able to envisage just now.

We want the plan to be clear and agreed, but there may be opportunities that emerge that will require the leadership of local community groups, encouraging on-going community involvement, volunteering and activism.

Strathaven and Glassford Community Council will;

- Keep the plan up to date and amend it where required;
- Liaise with South Lanarkshire Council about planning related implementation;
- Stimulate / support organisations to take on the actions identified in the Plan;
- Promote the Plan;
- Review progress;
- Monitor the impact of the Local Place Plan, potentially through (commissioning) external impact assessors.



Appendices

08

Appendix 1: About Our Place

Housing and Population

In 2022, there were 5,241 dwellings in the area. 97% were occupied and 2.7% were vacant (140 properties).

There is a (+3%) higher proportion of children and young people aged 0-16 than regional and national averages. There is also a (+1%) higher proportion of older people aged 65 and over. The working age population is around 4% lower than regionally and nationally.

The population has grown by 16.9% between 2001 and 2022, which is significantly higher than the average South Lanarkshire population growth (+8.2%) and the national average for population growth (+7.5%).

Employment and Income

The percentage of people claiming Universal Credit who are both employed and unemployed (7%) is around half that of the South Lanarkshire (14.2%) and national average (13.7%).

12.4% of children live in families with a relative low income, which is around half of the South Lanarkshire average (24.1%).

Education

For the most part, pupil attainment is higher than across the local authority. For example, there are more primary school pupils achieving the expected CfE levels in both literacy and numeracy and more leavers achieving one pass or more at SCQF level 6 or better. In 2021/22, 97.5% of school leavers were in a positive initial destination.

Transport

14.2% of households in the area do not own a car. While this is below the regional and national averages, it is statistically significant given the rural nature of the place indicating an increased reliance on public transport.

Housing and Property

The area is a relatively expensive place to live; just 5.7% of properties are in the most affordable council tax band, which is 15% lower than the national average. The mean price of homes in 2022 was £232,718, which is higher than the South Lanarkshire average of £188,414.

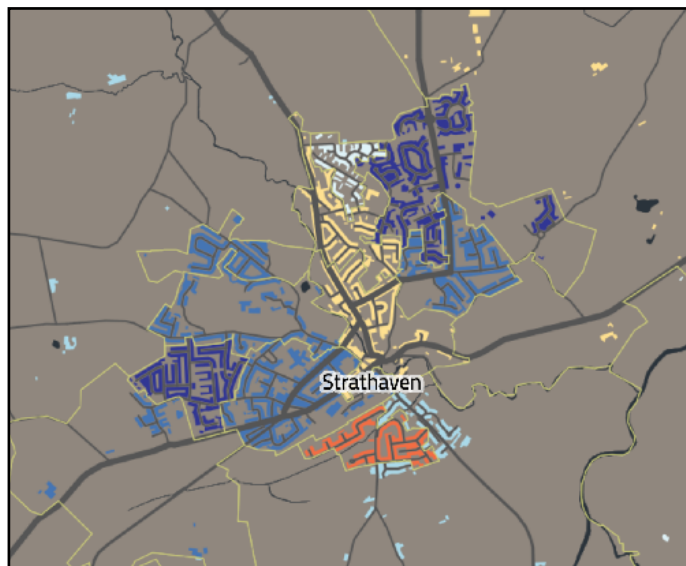
NRS data from 2017 shows that 60% of residential properties in the area are either detached or semi-detached houses. 22.6% are terraced properties and 16.9% are flats.

9.4% of properties in the area are socially rented. In 2022/2023, there were 354 council stock properties in the area.

SIMD 2020

The diagrams below show Strathaven and Glassford's SIMD data zones. This is an area of mixed deprivation.

The least deprived data zones are depicted in dark blue and the most deprived are in dark red:



Appendix 2: Summary of Community Consultation

Place Standard Assessment

Phase 1 of the development of the Strathaven and Glassford Plan (and subsequent LPP) was to undertake robust engagement practices and engage people from across the community. This phase helped to identify issues, ideas, and possible solutions.

The consultation was structured using the Place Standard tool, which provides a simple framework to understand all elements of place in a methodical way and pinpoint key areas of strength and areas for improvement.

The community survey was used as a key tool to assess the different categories. Respondents were asked to rate the area from 1 to 7 (1 being very poor and 7 being excellent) on the seven Place Standard indicators.

Natural space rated highest; this was followed by sense of community / play and recreation / feeling safe. The lowest scoring categories were traffic and parking / work opportunities and local economy.

A summary of the feedback from the community provided throughout the consultation has been included below:

Assets

The community itself is an asset:

- People want to remain living in the area in the longer term
- A sense of community, feeling safe and social interaction scored highly in the survey
- The strong community spirit was mentioned consistently across conversations, and by school pupils

Businesses and economy:

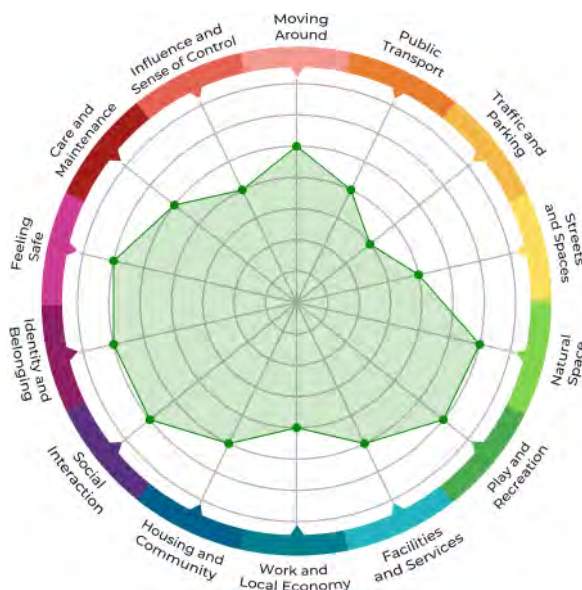
- The range of independent / local businesses is valued
- The year-round programme of events, including the Gala Days, Balloon Festival, Hangarfest etc. are significant assets

Green spaces are valued assets:

- This includes the surrounding countryside, as well as the formal parks in both Strathaven and Glassford

Public transport

- This has significantly improved with the introduction of the 3C bus



Challenges

Infrastructure:

- There is a clear concern that with the growth in population in Strathaven, the town's infrastructure is under significant pressure
- This includes e.g. access to GP services, and the physical infrastructure of e.g. schools being at capacity
- It also includes concerns about road maintenance, traffic management and parking
- There is a concern about the lack of public toilets
- There are some concerns about the general maintenance and upkeep of the area, e.g. litter, shop front maintenance in Strathaven

Housing:

- Despite the large number of new build properties, this has not improved access to affordable housing or smaller properties (e.g. for young people getting on the property ladder, or older people downsizing)

Public transport:

- The area is rural, and in a context where 15% of households in Strathaven do not own a car, public transport links are vital to local people and the economy
- There are concerns about what would be lost if the 3C bus was discontinued for any reason (including funding)
- There is a desire to see the 3C bus extended, both in terms of timetabling, and geographical reach (e.g. to Edinburgh)

Access to green spaces

- People would like to have better access to the countryside, e.g. through improved paths and signage
- There is concern about the maintenance of / facilities within Strathaven Park, in the context of local authority funding cuts

Business and economy

- More could be done to promote the independent retailers in Strathaven, both within the town, and by bringing people in to the area



Appendix 3: Wider Policy and Strategy Summary

The following policies and strategies are of particular relevance to the development of this Plan:

Scottish Government - National Performance Framework

NPF provides a national context for place, and is Scotland's wellbeing framework. The framework sets out a series of outcomes that reflect the values and aspirations of the people of Scotland. Each of these Outcomes is designed to help reduce inequalities and give equal importance to economic, environmental and social progress.

The NPF is closely linked to the Place Principle, which supports the National Performance Framework's collective purpose for Scotland and helps communities to apply it to local communities. Aspects of the NPF and associated outcomes that are relevant to this Plan have been summarised below:

Outcome	Link to this Plan
<p>Communities:</p> <p>Communities are pleasant places to live, where people have access to warm, efficient and affordable homes.</p> <p>We have high quality, affordable and accessible public services and facilities that positively enhance lives. We focus our investment on deprived communities and disadvantaged rural areas.</p> <p>Communities are friendly, vibrant and cohesive.</p> <p>Older people are happy and fulfilled and no one is isolated, lonely, living in poor housing or living in poverty.</p>	<p>This Plan sets out actions and projects to address all of these areas. By delivering our actions we will:</p> <p>Improve access to green space</p> <p>Help to increase the number of assets in community ownership</p> <p>Decrease the proportion of adults who report feeling lonely by ensuring the community has access to social and community spaces to come together.</p> <p>On the whole, the set of actions put forward in this Plan will help to make our community a better place to live.</p>
<p>Economy:</p> <p>Our economy is inclusive and focused on improving the lives of all our people. The benefits of economic growth, wealth and opportunities are fairly shared.</p>	<p>This Plan sets out steps to help boost and improve our local economy to support local businesses and improve the amount of local spending.</p>
<p>Environment:</p> <p>We value, enjoy, protect and enhance our environment by enhancing and protecting our natural assets and heritage. We ensure all communities can engage with and benefit from nature and green space.</p> <p>We promote high quality, sustainable planning, design and housing. Our transport infrastructure is integrated, sustainable, efficient and reliable. We promote active travel, cycling and walking, and discourage car reliance and use particularly in towns and cities.</p>	<p>This Plan sets out steps to help boost and improve our local economy to support local businesses and improve the amount of local spending.</p> <p>We will work to reduce reliance on cars.</p> <p>We will campaign to improve the network of public transport options locally, working alongside partners.</p>
<p>Fair Work and Business:</p> <p>We have thriving and innovative businesses with quality jobs and fair work for everyone.</p> <p>We successfully attract and retain new talent and fully support business and social enterprise.</p>	<p>This Plan sets out steps to develop our existing network of independent, local businesses.</p>
<p>Health:</p> <p>We are healthy and active.</p>	<p>We will improve access to healthcare and promote the development of leisure facilities for all age groups.</p>

The Place Principle

The Place Principle is the overarching context for place based working in Scotland. The Scottish Government and COSLA adopted the Place Principle in 2019 to help overcome organisational and sectoral boundaries, to encourage better collaboration and community involvement, and improve the impact of combined energy, resources and investment.

Developed by partners in the public and private sectors, the third sector and communities, the Place Principle helps establish a clear vision for collaboration around place. It promotes a shared understanding of place, and the need to take a more collaborative approach to a place's services and assets to achieve better outcomes for people and communities. The principle encourages and enables local flexibility to respond to issues and circumstances in different places. It helps partners and local communities unlock the National Performance Framework and make it applicable to where and how they live and work.

The Place Principle recognises that:

- Place is where people, location and resources combine to create a sense of identity and purpose, and is at the heart of addressing the needs and realising the full potential of communities.
- Places are shaped by the way resources, services and assets are directed and used by the people who live in and invest in them.
- A more joined-up, collaborative, and participative approach to services, land and buildings, across all sectors within a place, enables better outcomes for everyone and increased opportunities for people and communities to shape their own lives.

Planning (Scotland) Act 2019

The Planning (Scotland) Act 2019 sets the future structure of the modernised planning system. The Act includes a broad range of changes to be made across the planning system including:

- Arrangements for the preparation of development plans
- Proactive master planning
- Development management procedures and considerations
- Strengthening enforcement
- A focus on improved performance and positive outcomes

An important part of the legislation is the introduction of local place plans. Local Place Plans are community-led plans setting out proposals for the development and use of land. Once completed and then registered by the planning authority, they are to be taken into account in the preparation of the relevant local development plan.

Local Policy Context

South Lanarkshire Council Plan (Connect) 2022-2027

This plan sets out how the council will deliver its services and take action on the things that matter to residents, with the overall objective of improving the lives and prospects of those who live in South Lanarkshire. Priorities set out in this plan include:

- Putting people first and reducing inequality; working with communities to ensure their voices are heard and that they are supported to take action on the things that matter to them.
- Recovery, progression and improvement; including continued recovery from the pandemic, and progression in terms of delivering the right things that matter to everyone, in the right place, at the right time.
- Planet; working towards a sustainable future in sustainable places, working together to develop local solutions to protect nature and take action on climate change- supporting our young people to lead the way.

Afterword



We are proud that we are at the forefront of Local Place Plans in South Lanarkshire, alongside our neighbouring Community Councils, contributing to the next Local Development Plan of South Lanarkshire Council, and influencing decisions about the land and assets that are important to us. We want to thank the residents, businesses and organisations of Strathaven and Glassford who gave their time and ideas.

Keep an eye on the Strathaven and Glassford Community Council website for more developments:

<https://strathaven.org/>

And if you want to contact us directly, you can email us at:

strathavencommcouncil@gmail.com

Strathaven and Glassford Community Council

